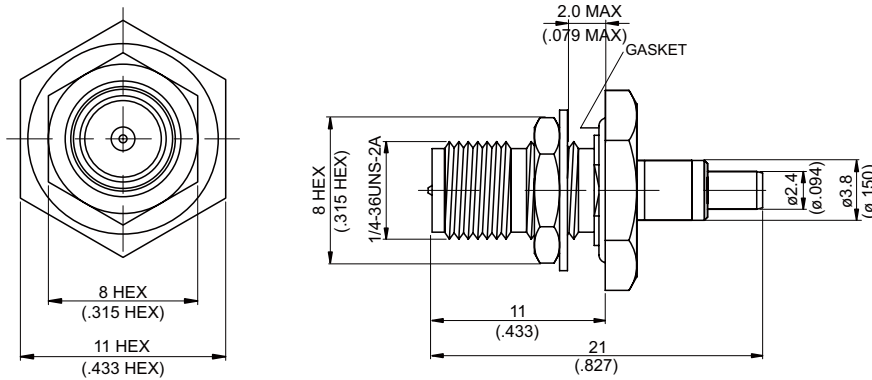
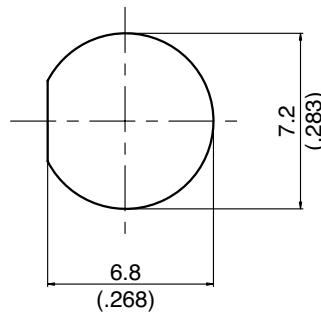


SMA8305A-0178

SMA Jack Solder For Bulkhead 50Ω



MOUNTING HOLE



| Parts | Material | Plating (Micro-inch) |
|-------------|------------------|--|
| Ferrule | Brass | Gold 4 Over Nickel Phosphorous Alloy 80 Over Copper 20 |
| Nut | Brass | Gold 4 Over Nickel Phosphorous Alloy 80 Over Copper 20 |
| Hex Nut | Brass | Gold 4 Over Nickel Phosphorous Alloy 80 Over Copper 20 |
| Lock Washer | Brass | Gold 4 Over Nickel Phosphorous Alloy 80 Over Copper 20 |
| Gasket | Silicone | |
| Contact Pin | Beryllium Copper | Gold 4 Over Nickel Phosphorous Alloy 80 Over Copper 20 |
| Insulator | Teflon | |
| Body | Brass | Gold 4 Over Nickel Phosphorous Alloy 80 Over Copper 20 |

Weight:

Suitable Cables: RG178, RG178-FEP, RG196

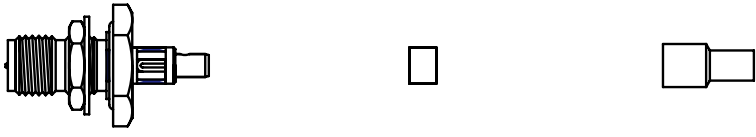
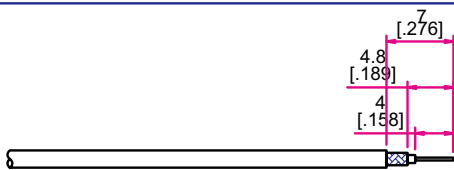
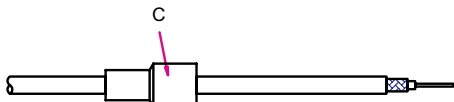
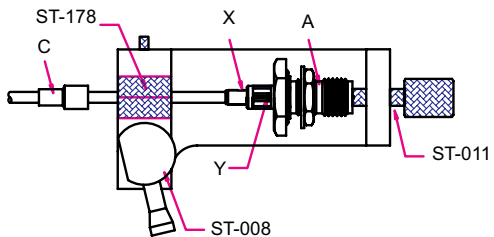
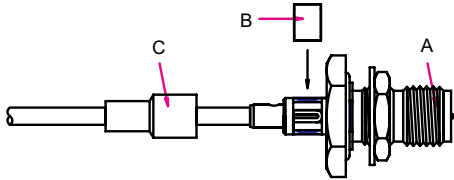
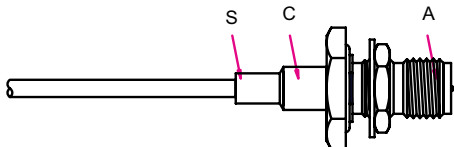
This part number complies with RoHS.

Notice: JYEBAO reserves the right to make modifications deemed appropriate.

CABLE ASSEMBLY INSTRUCTION

SMA8305A-0178

JYE BAO CO., LTD.

| DIAGRAM | ASSEMBLY INSTRUCTION |
|--|--|
| <div style="display: flex; justify-content: space-around; margin-bottom: 10px;"> A B C </div>  <div style="display: flex; justify-content: space-around; margin-top: 10px;"> <p>BODY + GASKET + WASHER + HEX NUT</p> <p>COVER</p> <p>INSULATOR</p> </div> | |
|  | <p>Step 1: STRIP AS SHOWN .</p> |
|  | <p>Step 2: SLIDE FERRULE "C" OVER CABLE .</p> |
|  | <p>Step 3: INSERT PREPARED CABLE INTO CONNECTOR BODY "A" AND USE SOLDERING FIXTURE "ST-008", INSERT TOOL "ST-178" AND LOCATOR TOOL "ST-011" TO FIX THE CONNECTOR. SOLDER IN "X" AND "Y".</p> |
|  | <p>Step 4: PUT COVER "B" ON BODY "A" .</p> |
|  | <p>Step 5: SLIDE FERRULE "C" TOWARDS THE CONNECTOR "A" AND CRIMP IN "S" .</p> |

This part number complies with RoHS.

Notice: JYEBAO reserves the right to make modifications deemed appropriate.